



ACHIEVEMENT



UNLOCKED

where education meets adventure

PART OF THE
Inspire & Achieve
FOUNDATION 

Looking for a place to learn, grow, and level up your future?

Welcome to Achievement Unlocked, where education meets adventure! Here at The Inspire and Achieve Foundation, every new challenge is a chance to level up your skills and develop as the hero in your own story. We believe learning should be an adventure; empowering young people to rise to new challenges as we journey together from solo reflection and personal development to outdoor education and community projects.

When the Inspire and Achieve Foundation started back 2009, we made a commitment to support young people across Nottinghamshire; to stand by their side, from barrier to breakthrough, to inspire them and empower them to achieve their best. That mission statement is as important today as it was back then as young people are increasingly placed under pressure leaving little time find their place in the world, or navigate any bumps in the road ahead.

Our alternative provision follows 15 years of front-line support, working with young people and their families to boost confidence, self-esteem and future prospects. As a team of educators and mentors, we've drawn on this experience to develop a new offering for Nottinghamshire; an ethically-driven, community based intervention which is both tailored to the modern age and the interests of young people.

SENIOR LEADERSHIP TEAM



Pippa Carter

Director



Jaye Crew

Provision Manager,
Safeguarding Lead



Edina Baines-Krawczyk

Mentoring Manager,
Careers Lead



Craig Stevens

Quality & Compliance
Manager, Health &
Safety Lead

OUR ETHICS

We create flexible and dynamic learning opportunities fuelled by:

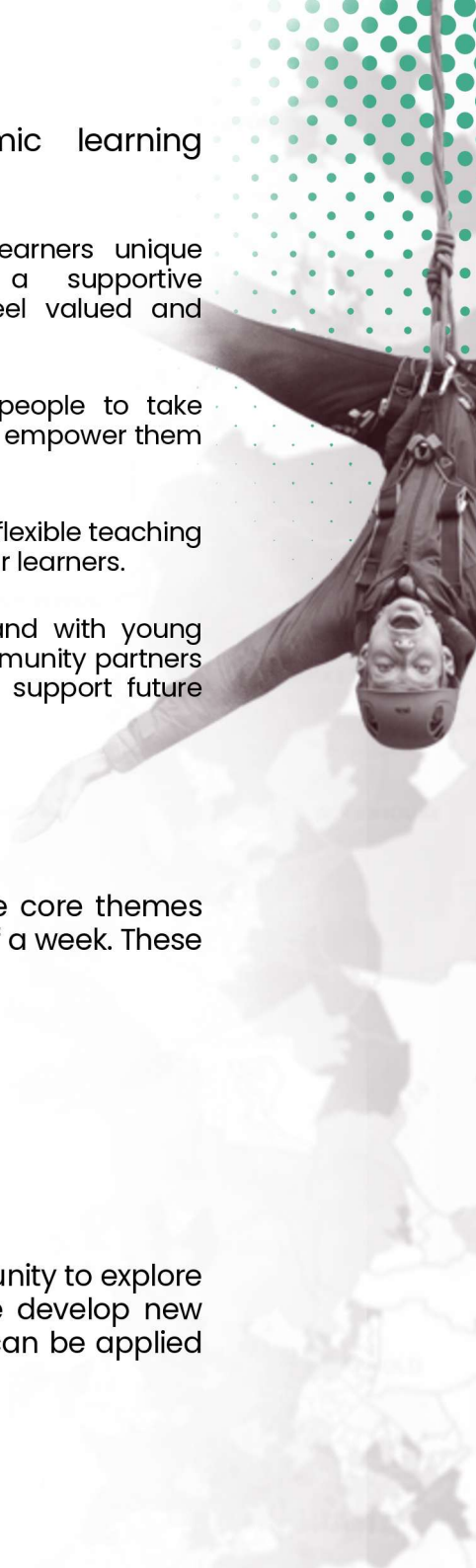
- **Inclusivity** - We embrace every learners unique strengths and needs, creating a supportive environment where young people feel valued and respected.
- **Empowerment** - We inspire young people to take ownership of their learning journey and empower them to achieve their best.
- **Creativity** - We believe in creative and flexible teaching styles that adapt with the interests of our learners.
- **Collaboration** - We work hand in hand with young people, their families, schools and community partners to build meaningful connections that support future success.

WHAT TO EXPECT

Our provision is structured around five core themes which are scheduled over the course of a week. These are:

- Project based learning
- Employability
- Personal development
- Enrichment
- Wellbeing & Lifeskills

Each day offers our learners an opportunity to explore these themes in greater detail, as we develop new skills and reflect on how our learning can be applied to real world scenarios.





CHOOSE YOUR PATH



Our programmes are tailored to a variety of learning styles meaning no path is off limits. From solo discovery to group missions, our tailored provision centres young learners in their educational journey as they develop the skills and strategies to navigate any obstacles that come their way.

THE KING'S TRUST ACHIEVE PROGRAMME

Team up and achieve with group sessions providing a dynamic, learner-led experience for ~10 students per class. With 15 guided learning hours per week, our learners co-design their educational journey around personal interests, choosing from modules such as Personal Development, Teamwork, Digital Skills, Career Planning, and more. This approach fosters autonomy, creativity, and practical learning to help you engage more deeply while developing vital life and employability skills.



NEED TO KNOW

WEEKLY GUIDED LEARNING HOURS: 15

SCHEDULE: Monday-Friday:
AM CLASS (9:30-12:30)

VENUE: The IAF Hub,
Mansfield Woodhouse,
NG19 9NJ.



**Personal
development**



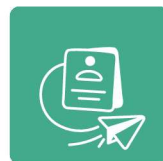
Teamwork skills



**Project-based
learning**



**Community
Impact**



**Preparing for the
world of work**



**Wellbeing &
physical activity**



**Money
management**



Digital skills



Career planning



**Experiencing the
word of work**

MATHS & ENGLISH

We embed Maths and English skills into all of our lessons and learners will develop confidence applying these skills to real world scenarios. All learners looking to power up their Maths and English skills will also have access to free, online Functional Skills tutoring and assessments as part of their 15 hours of weekly learning time.

Key Features include:

- Comprehensive initial assessment to make sure each learner starts at the right level
- Levels available from Entry Level 1 to Level 2.
- Official Pearson Edexcel awarding body
- Twelve months of access that continues even if a learner moves on
- Online exams available at home or at the IAF Hub with remote invigilation
- IT devices on loan for learners who want to study from home
- Full support from IAF staff, including a former Functional Skills teacher available for group or one-to-one sessions
- Parent and carer access to the platform to encourage engagement
- IAF manages everything including enrolments, coordination and exam bookings



EXPERIENTIAL LEARNING:

Real-world quests with real-world impact



Project-based experiences create an active, hands-on, environment for learning that is full of purpose. We encourage our learners to engage with the world around them through experiential days which give young people the chance to take on meaningful missions; connecting classroom learning with real-world action out in the community.

From launching their own Dragons' Den-style business pitches to building community allotments, our learners take the lead in creating, designing, and problem solving. Through real projects, with tangible outcomes, we offer young people a chance to make an impact whilst developing practical skills, and discovering hidden talents along the way.

Working as a group, young people learn to plan and adapt, reflect and follow through – skills that matter just as much in life as they do in work. Every challenge is designed with a wide range of needs and abilities in mind, ensuring that learners feel empowered and supported, not overwhelmed. Here each individual can play to their strengths, discover just how capable they truly are and feel proud of what's been achieved.





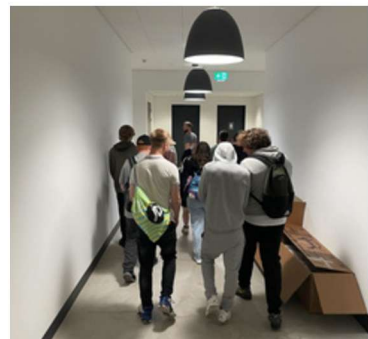
EMPLOYABILITY:

Routes into the world of work

Our curriculum offers a full-on expedition into the world of work where we guide young people through every stage of their journey. From building their first CV to stepping confidently into real workplaces, we engage learners to explore their career path through practical tools, real-world experiences, and personal discovery.

Starting with key skills like recognising strengths and interests and job searching, learners level up their employability with support from mentors and careers advisors. Through hands-on experiences like work placements and volunteering, we equip young people with unbiased insights into different roles, responsibilities and their rights as future employees.

Complementing the practical experiences gained through our project-based learning style, these employability days help learners to connect transferable skills to their career pathways, aligning their goals with their strengths, and building a career development plan that's as individual as they are.





PERSONAL DEVELOPMENT:

Becoming the Hero of Your Own Story



Every learner we support is on a unique journey and personal development is where they start to truly discover who they are and who they want to become. Through our personal development days, we help young people to recognise their strengths, set goals, and build the confidence they need to take their next step forward.

Personal development is woven into every part of our curriculum because we believe that continued growth is a mindset, not a subject. This space in the curriculum offers learners a moment to pause and explore personal values so they can start to find their voice. To support this journey, we use vocational profiling as a powerful tool to help learners map their past experiences, current skills, and future goals. Through strengths-based activities like target setting, journaling and team building, we explore what matters to them, how they work best, and how to lead themselves with empathy and purpose.





ENRICHMENT: *Adventures through connection*

The greatest adventures happen when young people explore what truly inspires them so our enrichment programme is designed to spark curiosity, creativity, and connection through shared experiences.

The spirit of adventure runs through our enrichment days as we head outside the classroom to visit museums, wildlife parks, and heritage sites. From the buzz of music production to the calm focus of a book club, all of our learners are encouraged to explore their interests and they often uncover talents they didn't know they had! For many of our young people, enrichment is where they begin to see their world differently; discovering what motivates them, what they enjoy, and what helps them feel part of something bigger.

Each term there is an opportunity to take part in exciting residential trips that push comfort zones and build independence. These experiences establish new friendships, and lifelong memories where every learner has the opportunity to shape their own adventure, one interest at a time.





WELLBEING & LIFE SKILLS:

Tools for the journey ahead



A great adventure starts with strong foundations which is why wellbeing and life skills are at the heart of our offer. We meet young people where they are and help them develop the life tools they need to stay strong and healthy for the journey ahead.

This element of our learning is about building the social confidence to form meaningful connections with the world around us and every step taken during our wellbeing days are steps toward a more confident, capable, and empowered future. These life lessons cover everything from mindfulness and self-care to healthy relationships and financial literacy, often leading to great group discussions and improved mental health.

Additionally, we believe that life skills should be lived, not just talked about so it's not uncommon to see learners roll up their sleeves for cooking challenges on wellbeing days. or getting active through sports.





LEVEL UP YOUR EXPERIENCE

We support a varied curriculum with wrap-around activities accessible through our vibrant youth hub. Participation is encouraged for all learners as you compete to earn experience points through side quests designed to expand your horizons.

WHAT IS XP?

Experience points (XP) is a common gaming term that we applied our youth activities programme to incentivise young people to try new things. We want our learners to think strategically about developing their skills and recognise that learning outside the classroom can be as rich and mobilising as lessons taught at a desk. XP offers a whole host of wrap around activities which give young people the chance to explore new interests and apply transferable skills. Activities currently include;

- Five-a-side football
- Dungeons & Dragons
- Pool tournaments
- Orienteering & geocaching
- Power kiting
- Cooking & life skills
- Creative crafts
- Lego design challenges
- Gaming & E-sports
- Wellbeing walks





CAREERS & WELFARE



We know that for young people who aren't in education, employment or training, planning the next step can feel like navigating without a map. That's why we make sure every bit of information, advice, and guidance is delivered in a way that's clear, personal, and genuinely helpful. We take time to understand each young person's journey so far, then work with them to explore options that match their goals, strengths, and interests without pressure or judgement.

CAREERS PROGRAMME

Our careers education is fully embedded within an ongoing careers programme aligned to the eight Gatsby Benchmarks, providing every young person with personalised, timely, and effective guidance. Through this approach, we empower learners to make informed decisions about their futures, re-engage with education, access meaningful training opportunities, and ultimately pursue fulfilling employment. We are committed to ensuring that by the time each learner leaves IAF, they will have had the opportunity to:

- Participate in at least one high-quality, impartial careers guidance intervention
- Engage in meaningful encounters with employers and education providers
- Take part in workplace experiences to explore different career paths
- Access up-to-date labour market information to inform their decisions
- Receive support in developing career management, employability, and personal development skills

This flexible and personalised approach ensures that every learner is well-prepared for their next steps and can make informed decisions about their future education, training, and employment pathways regardless of when they join our programme.

SAFEGUARDING

Securing the safety and wellbeing of our learners is our ultimate goal so we are committed to safeguarding and protecting young people on every step of their adventure. As trusted guides and allies, our dedicated safeguarding team make sure that every learner's story unfolds in a safe, respectful, and supportive environment, no matter where it leads. We do this with;

- A Designated Safeguarding Lead (DSL) and deputy with clear reporting procedures,
- Mandatory safeguarding training for all staff, with regular refreshers,
- Safer recruitment processes in line with statutory guidance in line with Keeping Children Safe in Education (Department for Education),
- Clear codes of conduct and professional boundaries for staff,
- A culture that encourages early identification and swift action on concerns,
- Strong partnerships with external agencies to provide comprehensive support.

TIME TO REFLECT

We support all of our learners to level up their skills and reflect on their progress through the evidence-based Outcomes Star. With support from our team, all learners will complete regular progress checks and self-assess their confidence levels, communication skills and aspiration. In these meetings, we'll discuss contributions both in and outside the classroom, celebrate achievements unlocked and explore opportunities to level up further with us or during your transition back into mainstream provision.

"Huge, heartfelt thanks to you for your help, support and determination in empowering my son to be able to access his education path. Two massive factors that contributed to this positive outcome and U-turn were his positive experience during the King's Trust course and your collective voices advocating so passionately for him"

-Parent





LEARN WITH US AT THE HUB

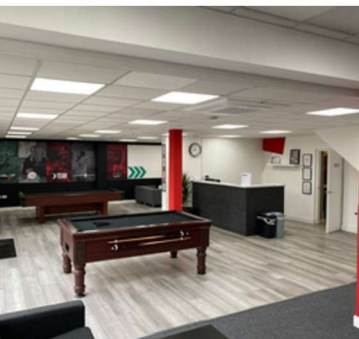


Mainstream environments can be challenging for learners and young people with special educational needs. Our teaching spaces and youth hub are designed to put young people at ease. With group classes of approximately 10 learners, everyone has space to be themselves and learn their way.

Based in Mansfield Woodhouse, our setting is perfectly positioned for learners across the Nottinghamshire county council local authority. We encourage all learners to visit our hub before their programme starts as this provides them, parents/carers, and transition teams with a chance to see us in action and explore everything on offer including;

- Dedicated youth hub which is open to all learners.
- Spacious teaching and learning environments
- Sensory rooms and breakout spaces
- Life skills kitchen
- Employability lounge and one-to-one mentoring rooms
- Enclosed garden for outdoor learning

Please contact our provision manager to book a site tour by emailing jaye.crew@inspireachieve.co.uk.





START YOUR ADVENTURE

If you feel that learning with us would benefit you, your child, or one of your students, we would love to hear from you. We're always here to listen and can offer friendly, unbiased advice on your options.

ENTRY REQUIREMENTS

To apply to join our programme, you must be aged 16+ with an ECHP and reside in the Nottinghamshire County Council local authority. Please note: While we are committed to inclusive and person-centred support, our provision is not currently equipped to safely meet the needs of young people who require personal care or have complex medical support needs.

MAKE A REFERRAL

The Inspire and Achieve Foundation are an approved alternative provision provider through Nottinghamshire County Council. To make a referral to Achievement Unlocked, please contact your Integrated Children's Disability Service Team. They will be able to advise on your next steps.

CONTACT US

As a parent/carer, you can contact us with any questions about Achievement Unlocked to have an informal chat before you make a referral. Please reach out to Jaye Crew, Provision Manager:

Email: jaye.crew@inspireachieve.co.uk

Phone: 07932649756

Office hours: Monday - Friday 9am - 5pm



**DELIVERY
PARTNER**

Achievement Unlocked is part of The Inspire and Achieve Foundation, a registered charity no.1129402 based at 159 Yorke Street, Mansfield, Nottinghamshire, NG19 9NJ.